

Creating People Sensing Solutions for a Better World

IEE has been leading the way in innovative sensing solutions and electronics manufacturing services for automotive, building management & security, Health Tech and beyond since 1989. From printed electronics to sophisticated car interior technologies that announce the vehicle of the future, including sensors for IoT based devices, we aim to deliver the best quality products.



Automotive

IEE provides a variety of sensors for vehicle safety and comfort, assisted/automated driving or battery management.

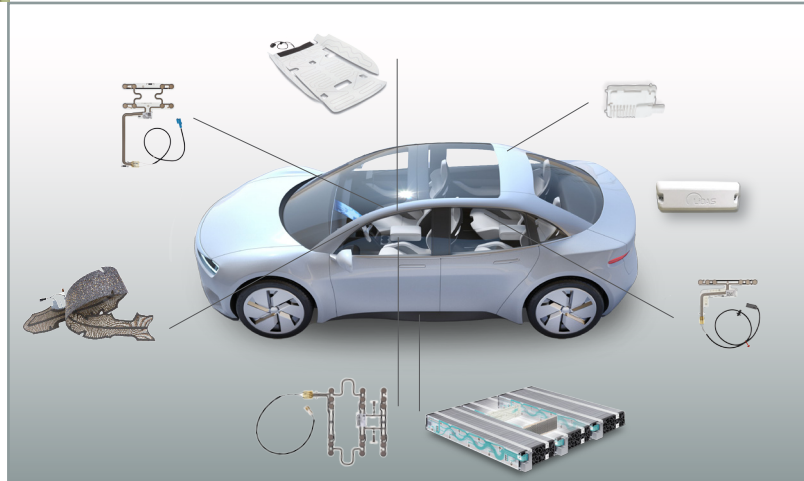
We pioneered in occupant detection and occupant classification and our hands-off detection for assisted and automated driving was an award-winning novelty. We launched the world's first in-cabin radar sensor - VitaSense - to detect unattended children.

Our exceptional products are backed up by a strong, in-house developed technological know-how, including capacitive sensing, pressure sensitive foil sensors and radar technology.

Headquartered in the Automobility Campus in Bissen, Luxembourg, the IEE Group including ALL Circuits runs businesses worldwide, with offices and facilities in Luxembourg, France, Slovakia, China, Japan, Korea, U.S.A, Mexico, and Tunisia. We rely on the workforce of 4.100 employees around the Globe, with a strong focus on R&D.

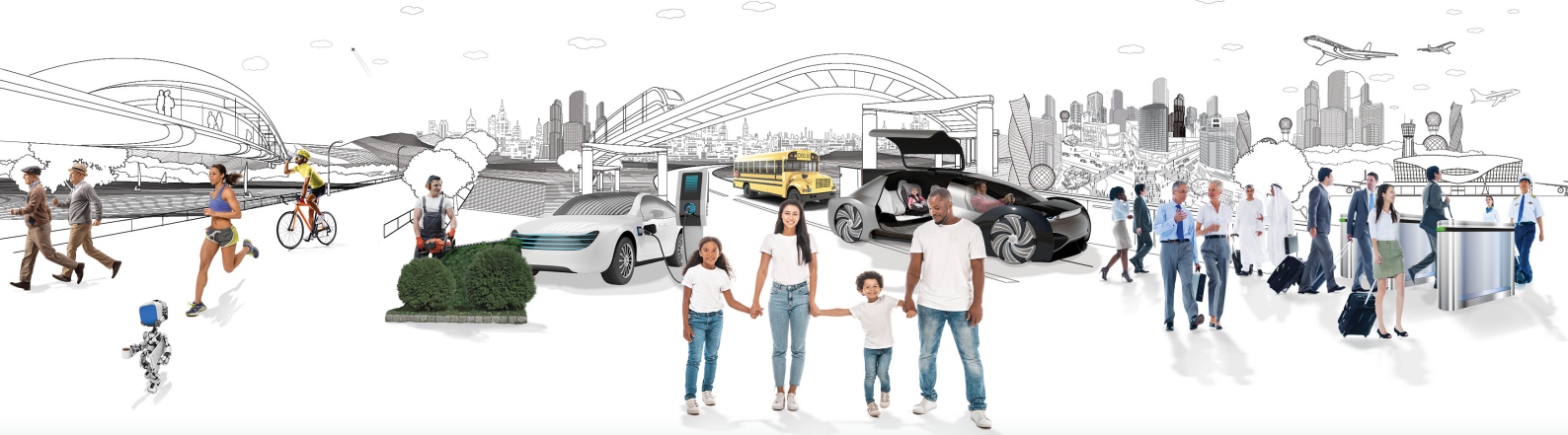
The possibilities to use our sensor systems in the everyday life are endless. Check our offer:

www.iee-sensing.com



a
sense
for **IEE**
innovation





Creating People Sensing Solutions for a Better World



Building Management & Security

- IEE's people counting system has been developed to help organizations optimize people flow, staffing and energy distribution.
- Our award-winning TDflex is an anti-tailgating solution supporting the management of authorized access to secure areas.
- TDexpress optimizes people flow through multiple speed gates.
- Our Volumetric Object Surveillance system offers reliable protection for all types of valuable objects.



Health Technologies

- Custom-made smart sensors and electronics integrate digital footwear solutions, professional bike saddles and other IoT projects. By helping collect valuable data, they boost sports performance or enable accurate medical monitoring.
- ActiSense footwear solution uses top notch pressure-sensing technology, real-time display and personal data visualization for reliable gait tracking and analysis, as well as optimized patient care (diabetes, obesity, Alzheimer's, etc.)



a
sense
for **IEE**
innovation

